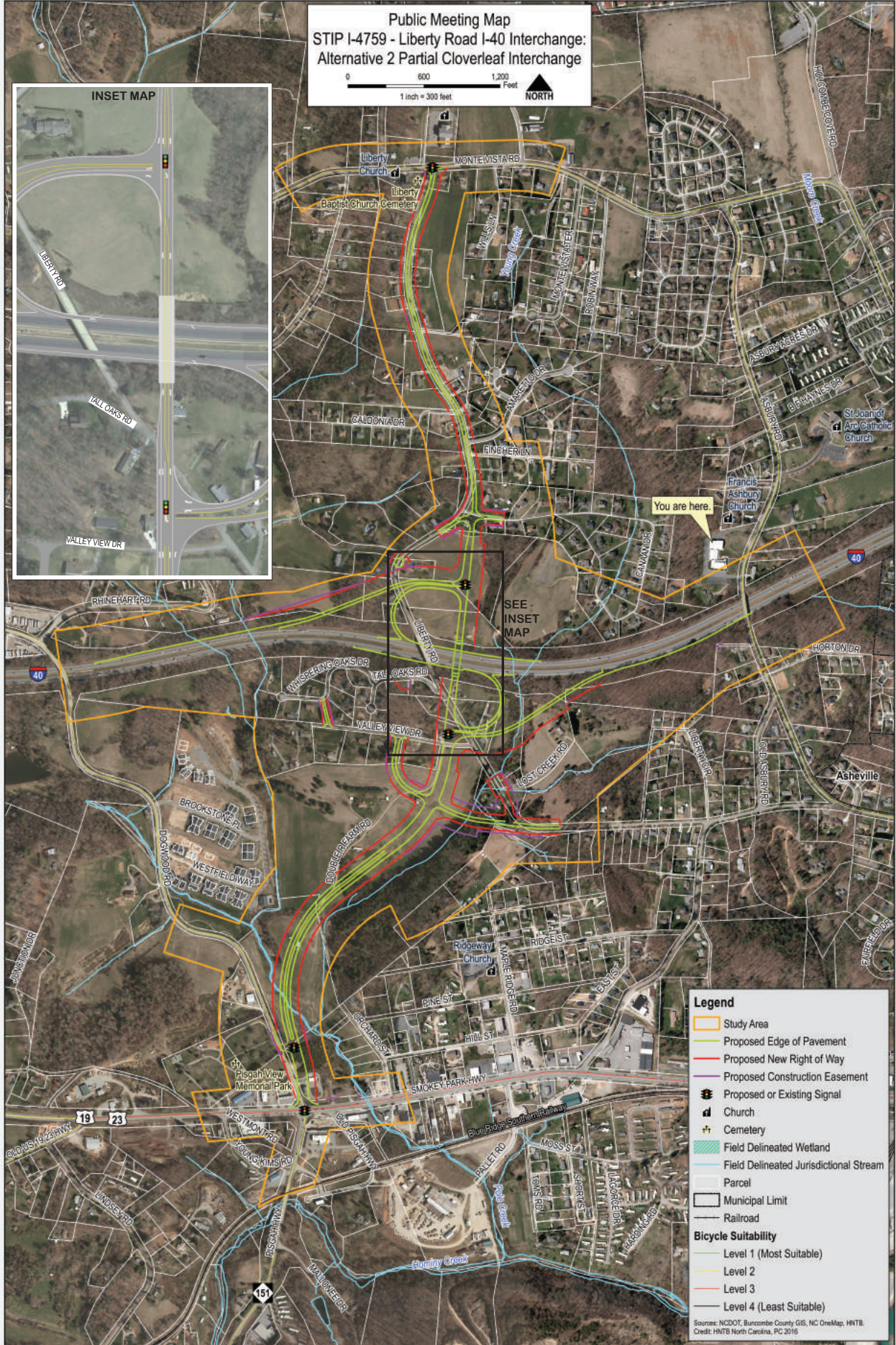


Public Meeting Map
 STIP I-4759 - Liberty Road I-40 Interchange:
 Alternative 2 Partial Cloverleaf Interchange



Legend

- Study Area
- Proposed Edge of Pavement
- Proposed New Right of Way
- Proposed Construction Easement
- Proposed or Existing Signal
- Church
- Cemetery
- Field Delineated Wetland
- Field Delineated Jurisdictional Stream
- Parcel
- Municipal Limit
- Railroad

Bicycle Suitability

- Level 1 (Most Suitable)
- Level 2
- Level 3
- Level 4 (Least Suitable)

Sources: NCDOT, Buncombe County GIS, NC OneMap, HNTB.
 Credit: HNTB North Carolina, PC 2016



	Required Right of Way (acres)	Parcels Potentially Affected	Streams (linear feet)	Floodplain (acres)	Estimated Construction Cost
Alternative 2 Partial Cloverleaf Interchange	50	60	1,540	0.8	\$34,900,000

Impacts based on functional design slope stake plus 40 feet. As design is refined, impacts are expected to decrease.
 Estimated construction costs include roadway construction and utility relocation costs. It does not include right of way, relocation, or planning and design, or mitigation costs.